

## UNIT 9 MARINE REPTILES AND BIRDS

The marine environment is home to a wide variety of birds and reptiles. At first glance, reptiles and birds may appear very different, yet there are some striking similarities.

Reptiles and birds are both v\_\_\_\_\_  
Reptiles and birds both have scaly skin.  
Reproduction is similar in reptiles and birds as both have  
i\_\_\_\_\_ f\_\_\_\_\_, followed by e\_\_\_\_\_ d\_\_\_\_\_

These similarities are part of the evidence that birds e\_\_\_\_\_ from reptilian ancestors.

In this unit we will discuss more similarities and differences between reptiles and birds as well as many adaptations they possess to help them survive in their environment.

### Reptiles:

The sea and shore provide a haven for many Reptile species. Reptiles that depend on the ocean for survival are referred to as \_\_\_\_\_.

There are four main groups of reptiles alive today, each groups has representatives in the marine environment. The four groups are \_\_\_\_\_

- All Reptiles belong to the class \_\_\_\_\_
- Most Reptiles have d\_\_\_\_\_ s\_\_\_\_\_ skin that protects them against w\_\_\_\_\_ loss. Why is this an advantage for Reptiles?
- All Reptiles live in w\_\_\_\_\_ or t\_\_\_\_\_ climates because they are e\_\_\_\_\_ (cold-blooded). What happens to reptiles in cold water?
- Most of a reptile's activities are dictated by the amount of warmth it receives from the s\_\_\_\_\_. Explain how crocodiles and sea turtle/sea snake are different when it comes to keep them warm.

Use pages 308 – 317 to answer the following questions

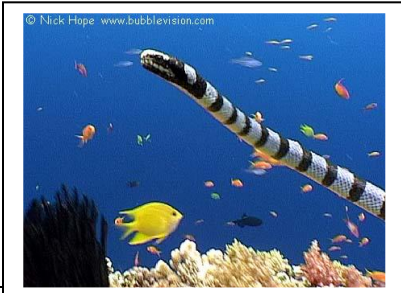
1. Discuss the special adaptations reptiles have for living in the sea.
2. What adaptations do sea snakes have for life in the ocean?
3. How does the marine Iguana regulate its temperature?
4. What kinds of food do the different sea turtle species eat?

Use page 315 to answer the following questions

5. How is satellite telemetry used to track sea turtles and what is done with the data?
6. Why is it important to know about the migratory routes of the sea turtle?
7. Describe two discoveries made by satellite telemetry about sea turtles locations.

For each of the following Reptiles: Describe the Reptiles s habitat and some adaptations the Reptiles have to help it survive in that environment. (Use pages 308 – 317)

1. Sea Snake –



2. Marine Crocodile –



3. Sea Turtle –



4. Marine Iguana –

